

### 1324

print mode	1440/720/360 DPI: 12 modes (resolutions and passes)
print speed	up to 300 sqft / h
head height	1.2 mm/ 2.0 mm
max media width	54"
max print width	53.6"
max media roll weight	42 lbs

Preliminary specifications, subject to change.



### 1624

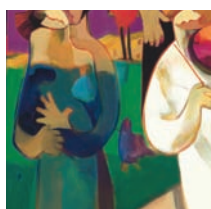
print mode	1440/720/360 DPI: 12 modes (resolutions and passes)
print speed	up to 313 sqft / h
head height	1.5mm/2.5mm
max media width	64"
max print width	63.6"
max media roll weight	66"

Preliminary specifications, subject to change.



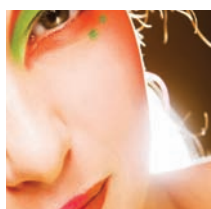
### 1608HS

print mode	1440/720/540 dpi 18 modes (resolutions & passes)
print speed	up to 120 sqft / h
head height	.1-10 mm
max media width	64"
max print width	63.58" Roll & Rigid
max media roll weight	67 lbs roll / 12 lbs rigid



### 1628TD/2628TD

print mode	720/540/360dpi, 14 modes (resolutions & passes)
print speed	up to 447 sqft / h
head height	3 Steps: low: 1.5 mm/ middle: 2.5 mm/ high 4.0 mm
max media width	64" / 104"
max print width	63.2" / 103.2"
max media roll weight	66 lbs. (176 w /optional HD take up) / 220 lbs.



### 1618

print mode	1440/720/540/360 dpi, 13 modes (resolutions & passes)
print speed	up to 480 sqft / h
head height	1.5 mm/ 2.5 mm
max media width	64"
max print width	63.6"
max media roll weight	67 lbs std./ 220 lbs optional



### 2606

print mode	1400/720/360 DPI: 10 modes (resolutions and passes)
print speed	up to 185 sqft / h
head height	1.5 mm/ 2.0 mm
max media width	102.4"
max print width	102"
max media roll weight	220 lbs

Mutoh is known as a true pioneer in the large format printing industry by introducing several innovations to the marketplace that have greatly enhanced the productivity and profitability of print shops just like yours. Recent innovations include the SPECTROVUE VM-10 on-printer spectrophotometer to provide users superior and reliable color reproduction and Mutoh's textile printers that give users the ability to print two different ink sets with two separate heads. Users are able to print both dye sublimation and pigment inks without skipping a beat. Mutoh has earned many awards and created many technological innovations in the printer industry including acclaim for superior media handling and precision motion control in its new generation of large format inkjet printers. Prior to the digital printing, Mutoh earned a reputation within the architectural and CAD/CAM industries for speed, accuracy and quality. The Mutoh legacy of innovation is poised to not only continue to but change the industry again and again.

**MUTOH**<sup>®</sup>  
1.800.99.MUTOH • MUTOH.com

**ValueJet**

**Built to Perform**  
Priced to Compete



The ValueJet Team

**MUTOH**<sup>®</sup>

### 1324 The perfect fit for your needs.

A high-performance 54" eco-solvent printer (prints up to 300 sqft / h) featuring cutting-edge print technology and precision engineering.



The ValueJet 1324 gives you cutting-edge technology and outstanding print quality that will delight quality aficionados at a surprisingly affordable price. This right sized printer is a perfect fit for shops with limited floorspace. But don't let the size and price fool you, the ValueJet 1324 is a workhorse that prints up to an astonishing 300 sqft / h with an all new state-of-the-art print head. In addition to an automatic sheet off function, we have added a service door to make maintenance a snap. The ValueJet 1324 can be equipped with the SPECTROVUE VM-10.

### 1624 The best just got better.

Mutoh's renowned 64" printer has just been enhanced to give you a remarkable new printer that is second to none.



From the creative visionaries at Mutoh comes the latest printer to set the standard for the large-format printing industry. Utilizing an all-new state-of-the-art print head, the 64" The ValueJet 1624 prints up to a blazing 313 sqft/h, giving you a very significant boost in capability. The ValueJet 1624 is able to be equipped with the SPECTROVUE VM-10 spectrophotometer to help ensure optimum color reproduction and reproducibility on multi-run print jobs or jobs printed on different substrates.



**1618 The fastest way to grab attention.** The red-hot ValueJet 1618 prints up to a staggering 480 sqft/h so you can get the most out of your valuable production time.



Potentially you can double your income with a printer that can generate up to double the print speeds and the incredible ValueJet 1618 can do just that. Known as the best value in the business, Mutoh printers can set you up to succeed. With the ValueJet 1618's sensational print quality, rugged construction, scorching print speeds and surprisingly attractive price, that you can get a very rapid return on your investment and potentially grow your business very rapidly. This is the right printer for busy banner production shops.

**2606 High-quality, commercial outdoor printing.** With a maximum media width of 102.4", the ValueJet 2606 is a powerhouse for large commercial applications.



Tackle even the biggest jobs with the ValueJet 2606. Its large size, high print quality and rugged construction make it ideal for big jobs and those looking to get the most out of an investment in a big job printer. The ValueJet 2606 delivers high impact billboard prints with incredible durability. This is the ideal printer for any outdoor printing situation. As with all the ValueJet printers, the 2606 utilizes Mutoh's patented i<sup>2</sup> Intelligent Interweaving technology, which allows for increased print speeds and virtually eliminates banding.

**1608HS Watch your ideas take shape.** An affordable alternative to UV printing that produces breathtaking prints with our new bio-based MP Ink.



Print on rigid or flexible substrates with equal ease with the ValueJet 1608HS Hybrid printer. It's built in SPECTROVUE VM-10 spectrophotometer helps insure optimum color reproduction on multi-run print jobs or jobs printed on different substrates. With the Mutoh ValueJet 1608HS, taking your projects from idea to prototype, to putting them into production, is easy and affordable. The ValueJet 1608HS is an ideal printer for packaging prototypes, POP displays and signage and can print on Foam Board, Coroplast, Acrylic, Polystyrene, PVC, Vinyl and more.

**1628TD/2628TD High-resolution printing on fabric.** Enjoy the flexibility to print two different ink sets onto textiles with two different heads.



The ValueJet 1628TD/2628TD operate with equal ease and quality whether they are printing pigment on polyester fabrics or dye-sublimation inks onto dye-sublimation transfer paper. They are designed for a variety of fabric and textile printing applications, such as: trade show graphics, art prints, flags, fabrics for custom clothing, fabrics for interior design and more. You can print up to a scorching 447sqft/h in draft mode and will enjoy the flexibility of printing from either 220 ml ink cartridge or a bulk ink system.